

The image features a textured, light-colored background on the left side, transitioning into a background of architectural blueprints on the right. The blueprints are rolled up and partially unrolled, showing various technical drawings, lines, and text. A thin, gold-colored rectangular frame is overlaid on the blueprints. The main title is centered over the transition area.

CAHIER DE PLANS

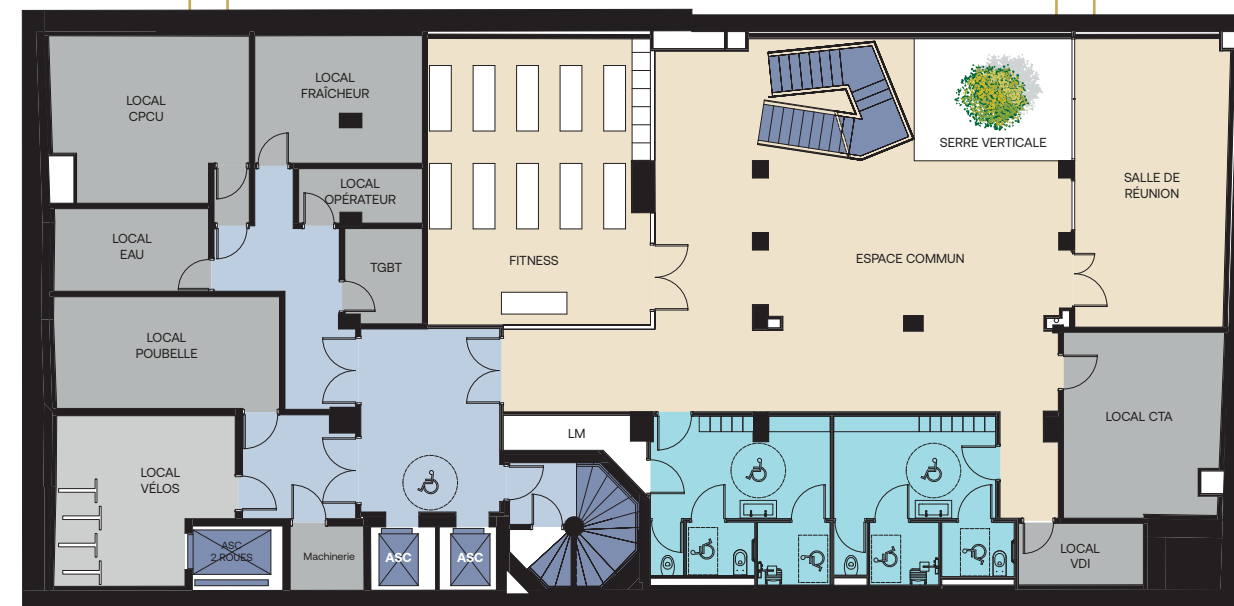
PARIS 16

DIX
HUIT
HAMMELIN

SURFACES ET NOMBRE DE POSTES

Niveaux	SUBL (m ²)	Nombre de postes	Effectifs sécuritaires
Rez-de-jardin	351	-	50
Business Center	368	-	50
RdC	351	7	20
R+1 bas	160	19	20
R+1 haut	367	31	40
R+2	340	48	40
R+3	307	43	40
R+4	271	32	40
Total	2 515	180	300

Rez-de-jardin 351 m²



Business Center 368 m²



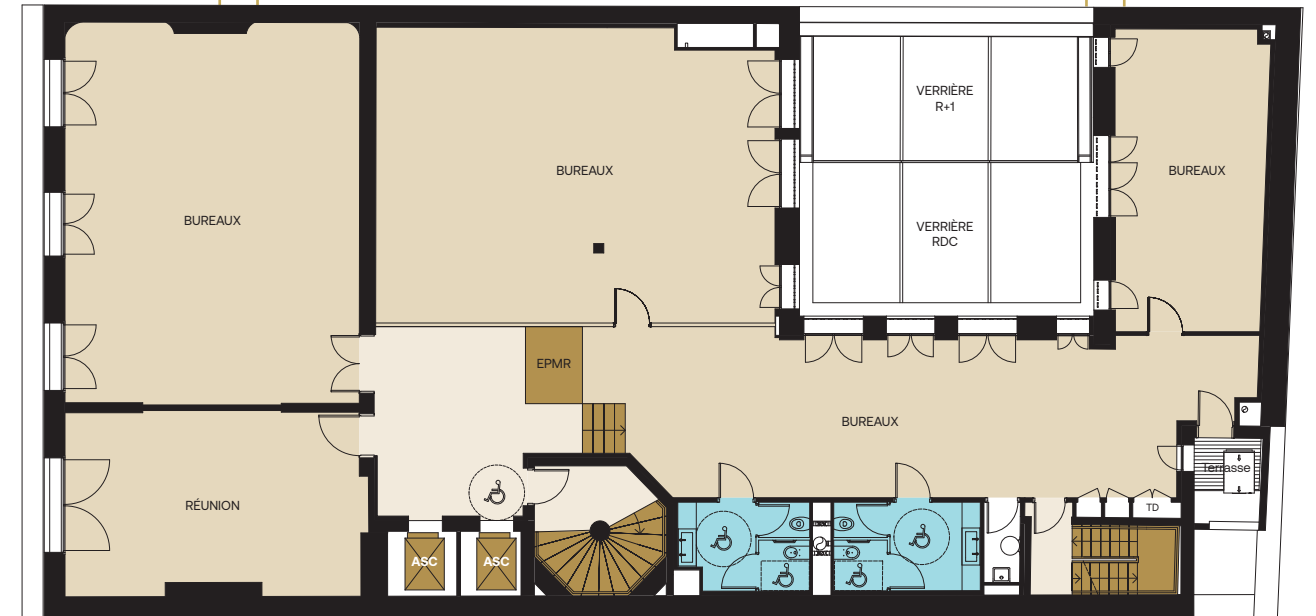
Rez-de-chaussée 351 m²



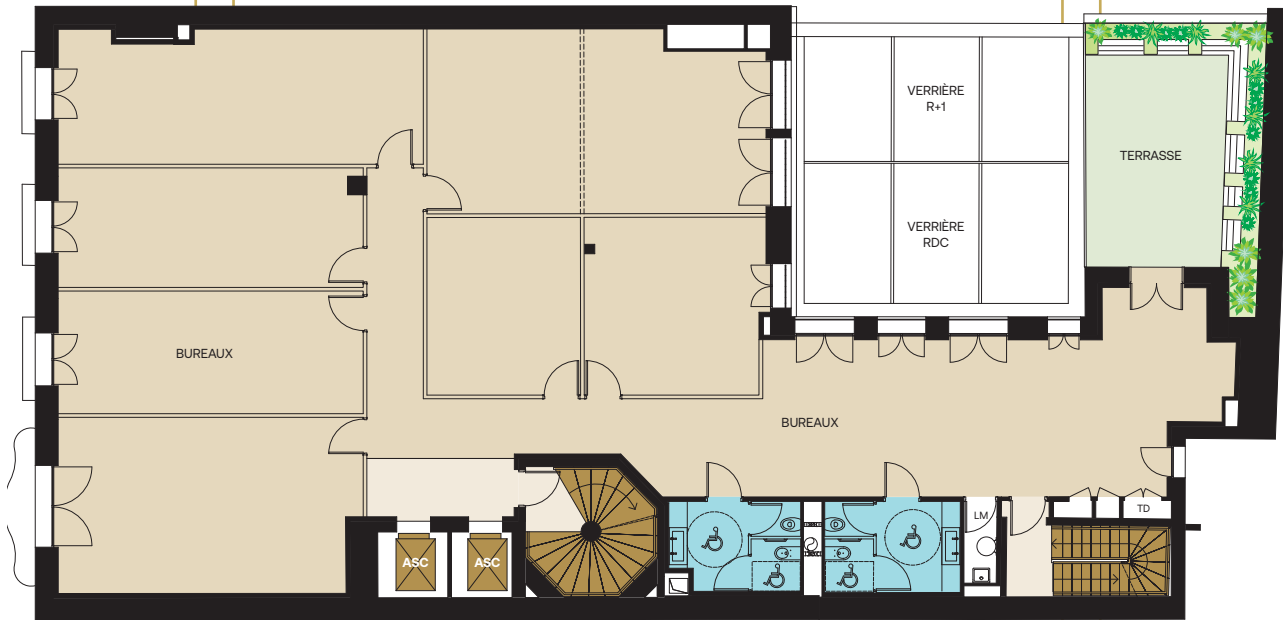
1^{er} étage bas 160 m²



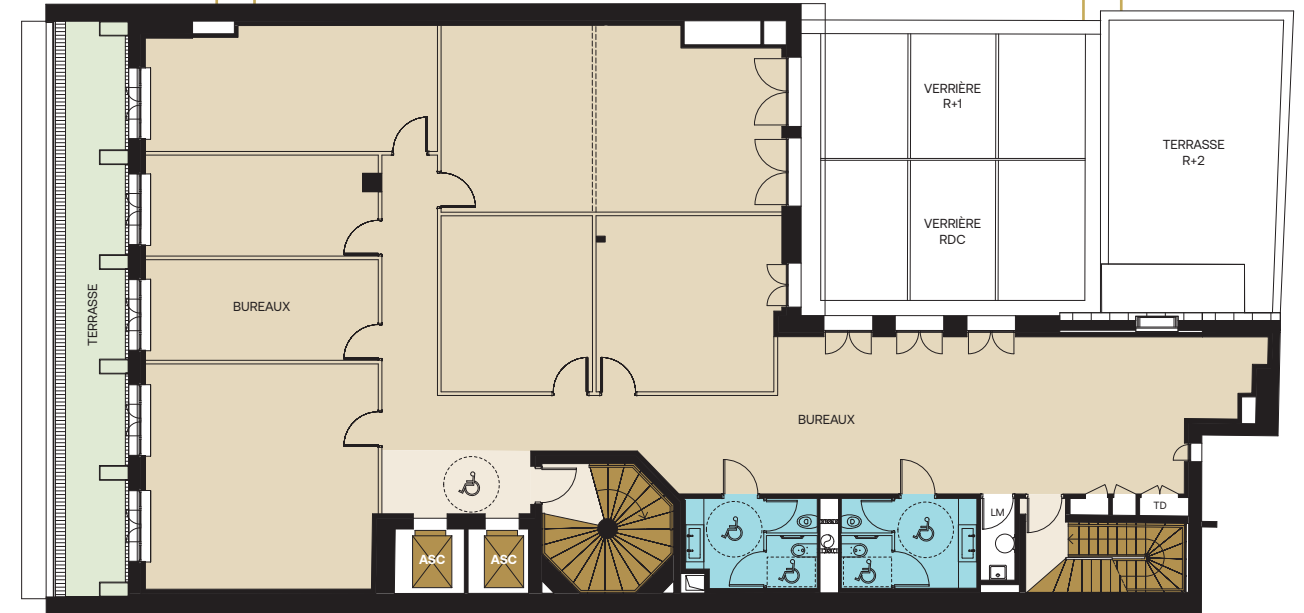
1^{er} étage haut 367 m²



2^e étage 340 m²



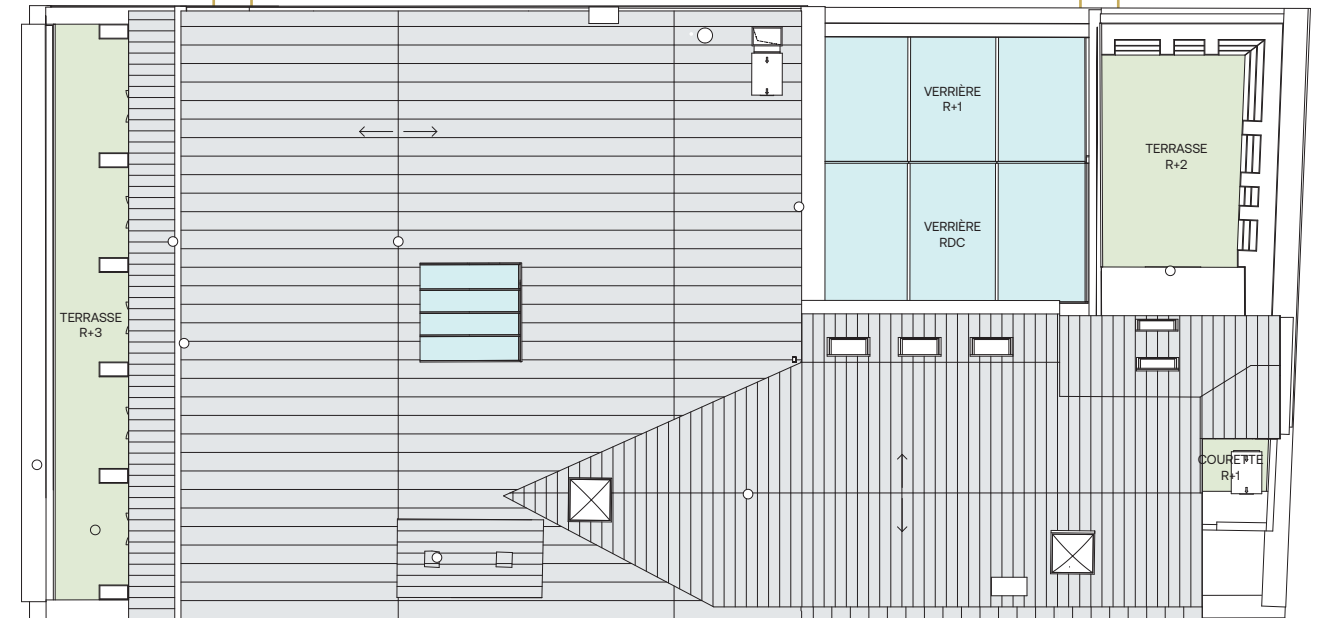
3^e étage 307 m²



4^e étage 271 m²



Toiture





18hamelin.fr

CONTACTS



Steve MIMOUN

06 68 39 59 22
steve.mimoun@jll.com



Julius FARCOT

06 79 51 72 59
juliusfarcot@alexbolton.fr