

The image features a textured, light-colored background on the left side, transitioning into a detailed architectural drawing on the right. The drawing consists of several overlapping sheets of paper, each showing various technical drawings, including floor plans, elevations, and sections. The drawings are rendered in black lines on a white background. A prominent feature is a large, thin, gold-colored rectangular frame that encloses a portion of the central drawing. The overall aesthetic is professional and artistic, typical of a high-end architectural firm's branding.

CAHIER DE PLANS

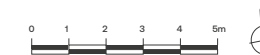
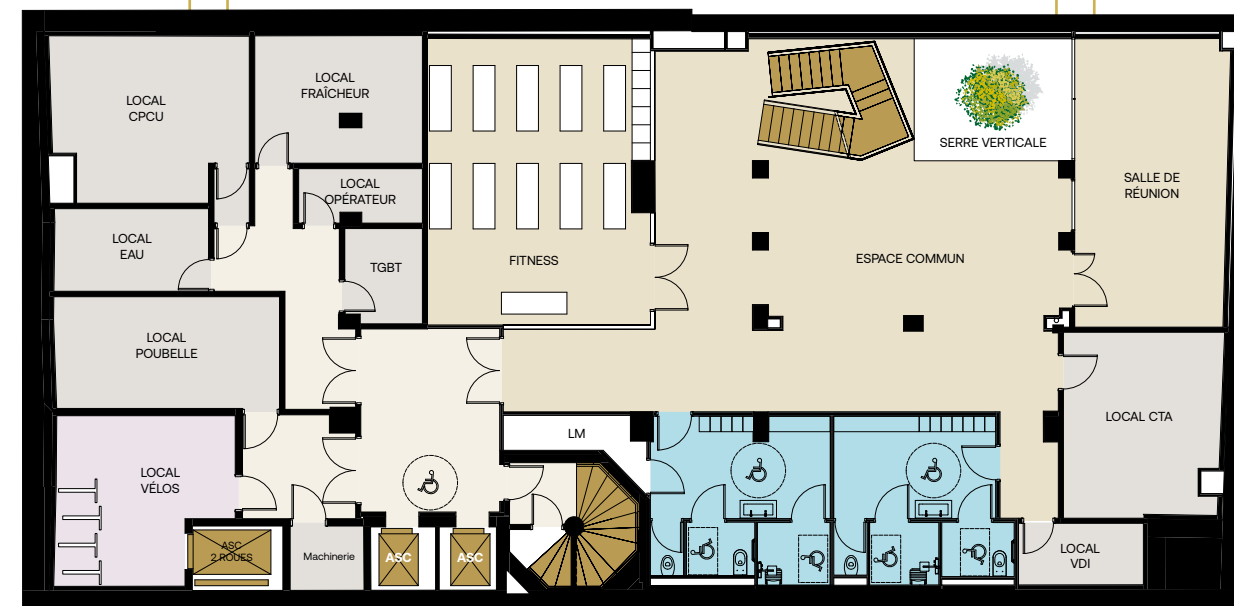
PARIS 16

DIX
HUIT
HAMELIN

SURFACES ET NOMBRE DE POSTES

Niveaux	SUBL (m ²)	Nombre de postes	Effectifs sécuritaires
Rez-de-jardin	351	-	50
Business Center	368	-	50
RdC	351	7	20
R+1 bas	160	19	20
R+1 haut	367	31	40
R+2	340	48	40
R+3	307	43	40
R+4	271	32	40
Total	2 515	180	300

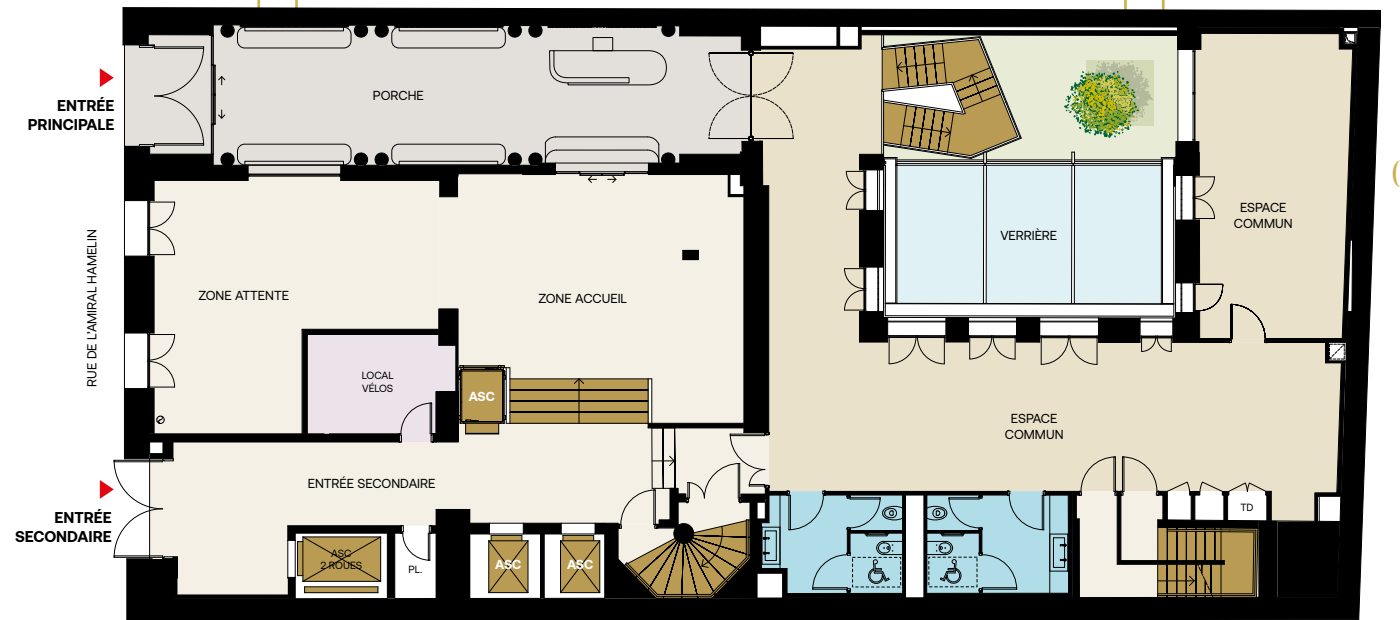
Rez-de-jardin 351 m²



Business Center 368 m²



Rez-de-chaussée 351 m²



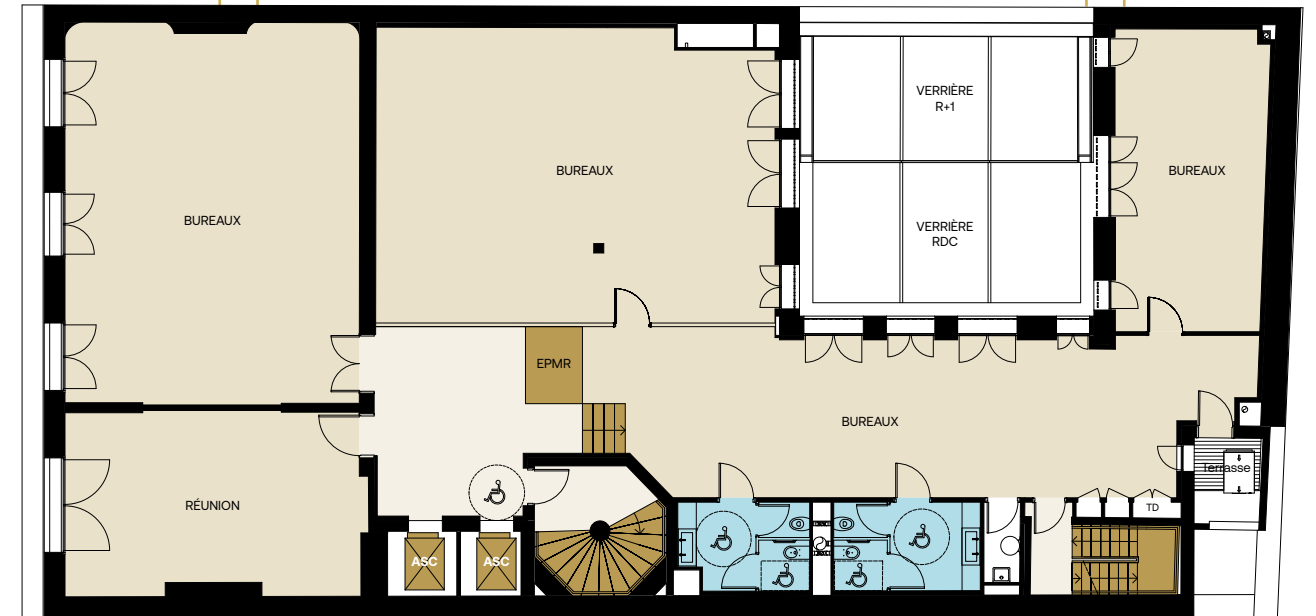
04

05

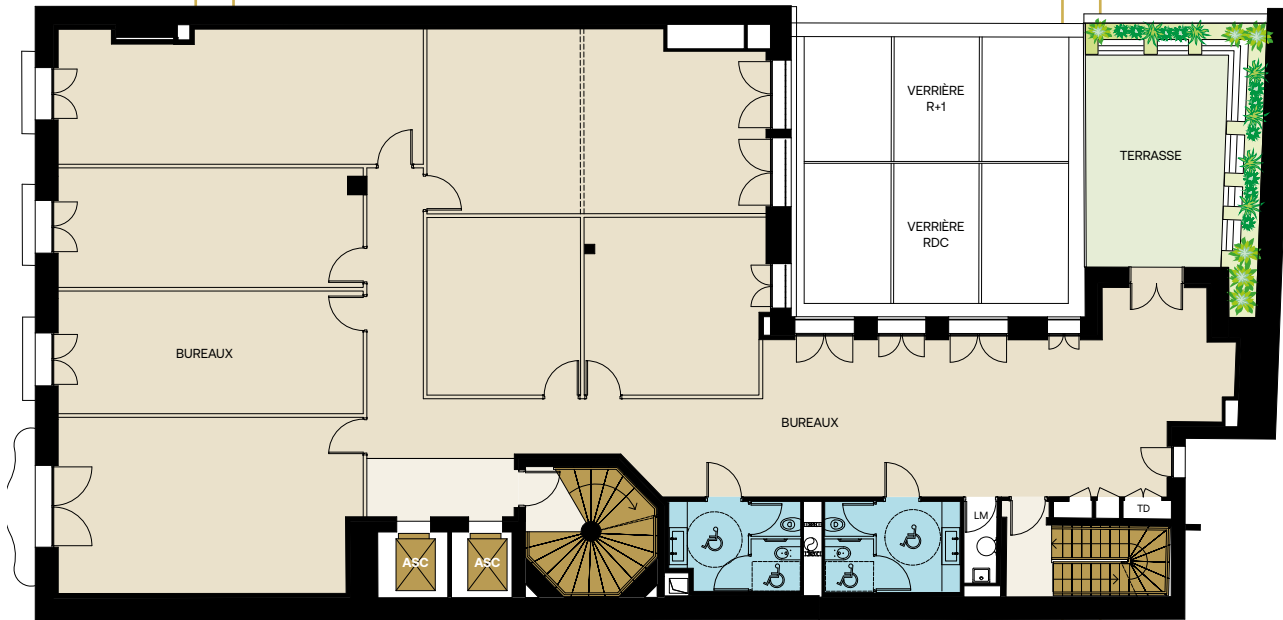
1^{er} étage bas 160 m²



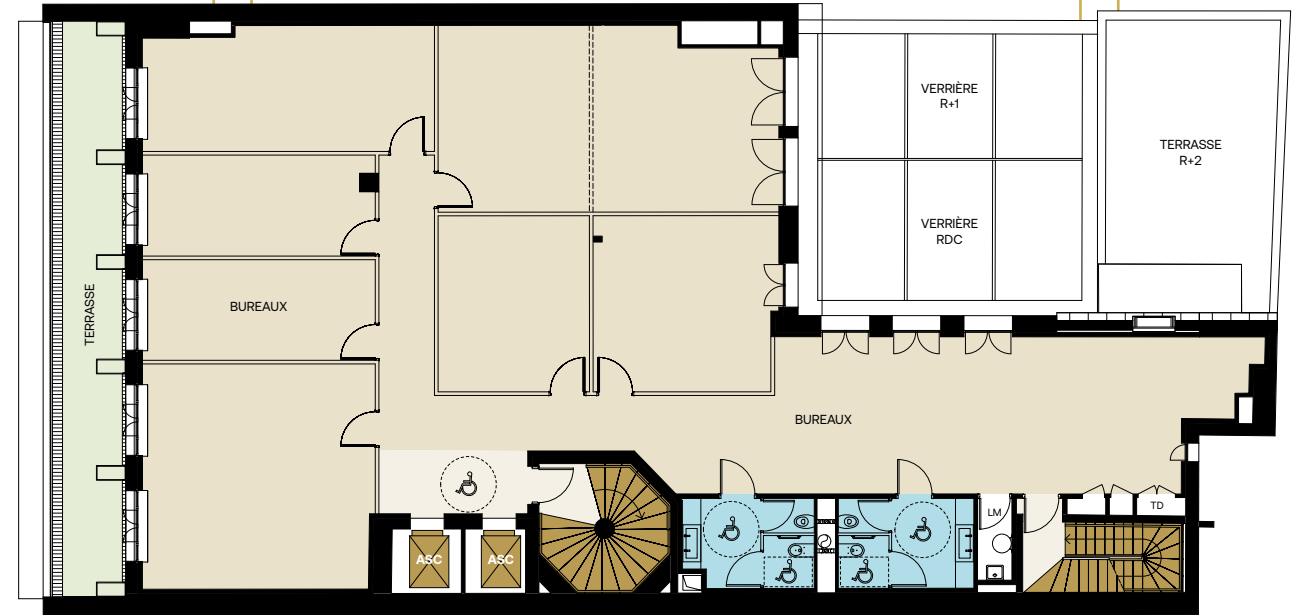
1^{er} étage haut 367 m²



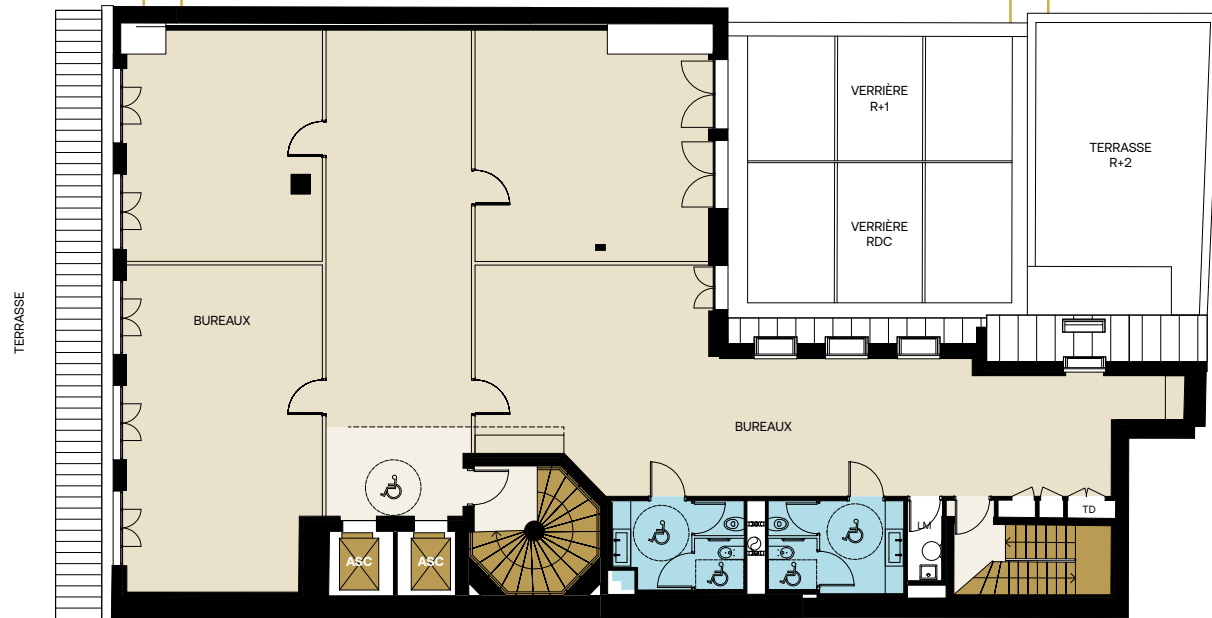
2^e étage 340 m²



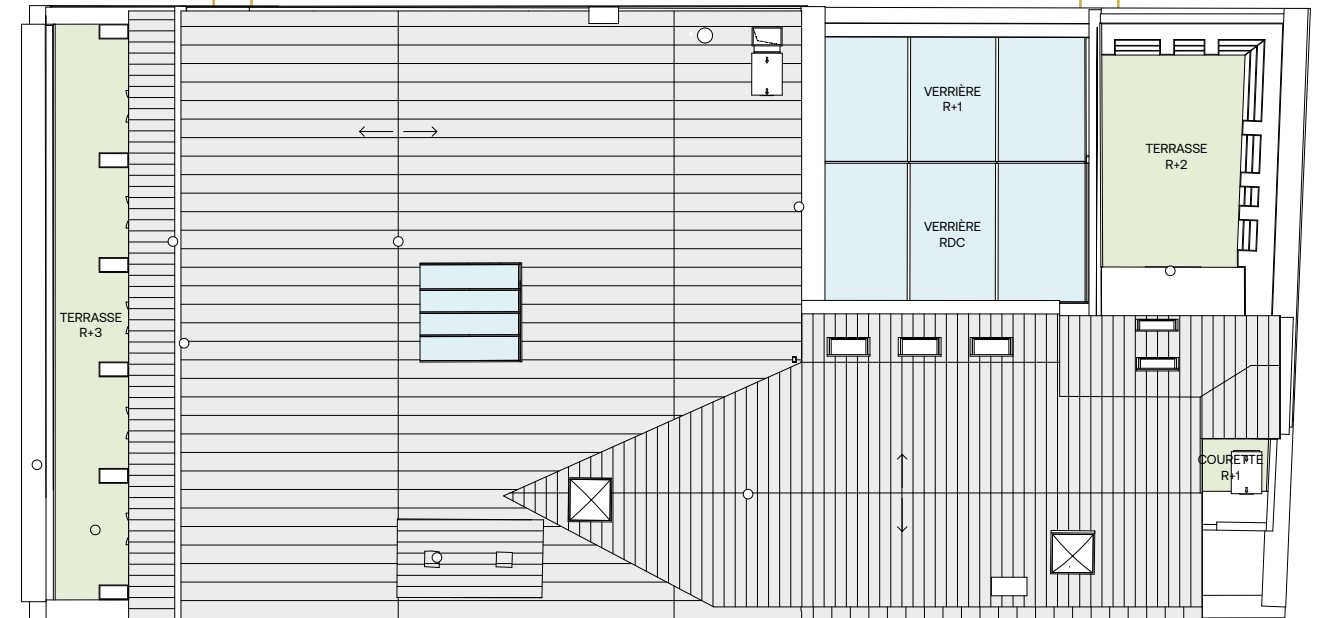
3^e étage 307 m²



4^e étage 271 m²



Toiture





18hamelin.fr

CONTACTS



**BNP PARIBAS
REAL ESTATE**

Pascaline Harrelcourtes

06 22 12 89 32

pascaline.harrelcourtes@realestate.bnpparibas



Julius FARCOT

06 79 51 72 59

juliusfarcot@alexbolton.fr